

TCM-S63/S64V/S65/S66V

SONY[®] SERVICE MANUAL

US Model

TCM-S63/S64V/S66V

Canadian Model

TCM-S64V/S65/S66V

AEP Model

TCM-S65/S66V

UK Model

TCM-S65/S66V

E Model

TCM-S63/S64V

Tourist Model

TCM-S66V

SUPPLEMENT-2

File the Supplement with the Service Manual and Supplement-1.

Subject :

1. CHANGE OF BOARD
2. A CANADIAN MODEL HAS BEEN ADDED FOR TCM-S64V.
3. CORRECTION

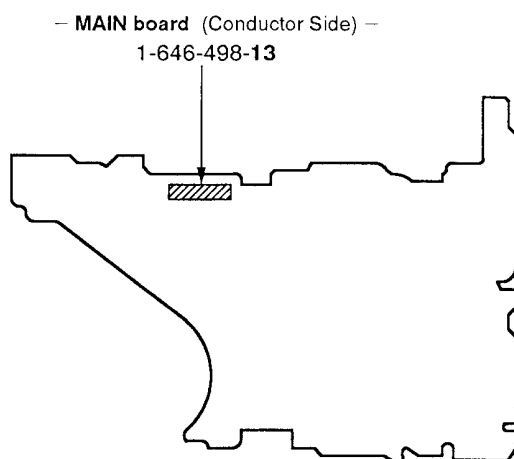
(ECN-MT300499)

1. CHANGE OF BOARD

The main board have been changed.

Printed wiring boards and schematic diagram of new type, and changed parts list are described in this Supplement-2.
Refer to original service manual previously issued for the other information.

NEW TYPE IDENTIFICATION



1-1. PRINTED WIRIN

● SEMICONDUCTOR LOCATION

Ref. No.	Location
D101	G - 9
D102	G - 9
D401	H - 11
IC101	G - 9
IC501	E - 10
IC601	D - 5
Q101	D - 9
Q102	G - 10
Q501	D - 9
Q502	E - 8
Q503	F - 10

● SEMICONDUCTOR LEAD LAYOUTS

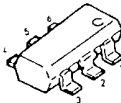
LA5523



2SC1623-L5L6
2SD1819A-R
UN5119



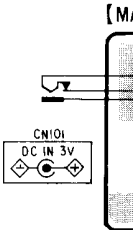
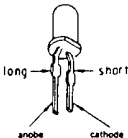
XN4501



1SS226



TLR124



- Note:
- : parts
 - : parts
 - : Throu
 - ▨ : Patt
 - ▨ : Patt
 - : print

1-3. CHANGED ELECTRICAL PARTS LIST

MAIN

Ref. No.	Former Type					New Type					Remark
	Part No.	Description				Part No.	Description				
C102	1-126-160-11	ELECT	1uF	20%	50V						Deleted
C104	1-162-964-11	CERAMIC CHIP	0.001uF	10%	50V	1-163-009-11	CERAMIC CHIP	0.001uF	10%	50V	Changed
C113	1-164-156-11	CERAMIC CHIP	0.1uF		25V	1-163-038-00	CERAMIC CHIP	0.1uF		25V	Changed
C115	1-164-346-11	CERAMIC CHIP	1uF		16V	1-164-005-11	CERAMIC CHIP	0.47uF		16V	Changed
C120	1-162-964-11	CERAMIC CHIP	0.001uF	10%	50V	1-163-009-11	CERAMIC CHIP	0.001uF		50V	Changed
C128	1-164-156-11	CERAMIC CHIP	0.1uF		25V	1-163-031-11	CERAMIC CHIP	0.01uF		50V	Changed
C129	1-162-964-11	CERAMIC CHIP	0.001uF	10%	50V	1-163-009-11	CERAMIC CHIP	0.001uF		50V	Changed
C502	1-164-156-11	CERAMIC CHIP	0.1uF		25V	1-163-038-00	CERAMIC CHIP	0.1uF		25V (S64V, S66V)	Changed
JR3	1-216-296-00	METAL CHIP	0	5%	1/8W						Deleted
JR4	1-216-296-00	METAL CHIP	0	5%	1/8W						Deleted
JR5	1-216-296-00	METAL CHIP	0	5%	1/8W						Deleted
Q101	8-729-402-32	TRANSISTOR	2SD1819A-R			8-729-120-28	TRANSISTOR	2SC1623-L5L6			Changed
R107	1-216-838-11	METAL CHIP	27K	5%	1/16W	1-216-083-00	METAL GLAZE	27K	5%	1/10W	Changed
R112	1-216-801-11	METAL CHIP	22	5%	1/16W	1-216-009-00	METAL GLAZE	22	5%	1/10W	Changed
R113	1-216-813-11	METAL CHIP	220	5%	1/16W	1-216-033-00	METAL GLAZE	220	5%	1/10W	Changed
R115	1-216-800-11	METAL GLAZE	18	5%	1/16W	1-216-156-00	METAL GLAZE	18	5%	1/8W	Changed
R117	1-216-853-11	METAL CHIP	470K	5%	1/16W	1-216-113-11	METAL GLAZE	470K	5%	1/10W	Changed
R123	1-216-823-11	METAL CHIP	1.5K	5%	1/16W	1-216-053-11	METAL GLAZE	1.5K	5%	1/10W	Changed
R501	1-216-883-11	METAL CHIP	10K	5%	1/16W	1-216-073-00	METAL GLAZE	10K	5%	1/10W (S64V, S66V)	Changed
R601	1-216-832-11	METAL CHIP	8.2K	5%	1/16W	1-216-071-00	METAL GLAZE	8.2K	5%	1/10W	Changed
R604	1-216-834-11	METAL CHIP	12K	5%	1/16W	1-216-075-00	METAL GLAZE	12K	5%	1/10W	Changed
R605	1-216-829-11	METAL CHIP	4.7K	5%	1/16W	1-216-065-00	METAL GLAZE	4.7K	5%	1/10W	Changed
R606	1-216-829-11	METAL CHIP	4.7K	5%	1/16W						Deleted
R607	1-216-842-11	METAL CHIP	56K	5%	1/16W						Deleted

2. A CANADIAN MODEL HAS BEEN ADDED FOR TCM-S64V.

The Canadian model of the TCM-S64V is similar to the US model of the TCM-S64V.
Only parts that have been added or changed are listed here.
For other information, refer to the previously issued original service manual.

EXPLODED VIEWS PARTS LIST

Ref. No.	Part No.	Description
5	3-385-886-11	CABINET (FRONT) (S64V:Canadian)

ACCESSORIES & PACKING MATERIALS

Ref. No.	Part No.	Description
*	3-387-183-01	CUSHION (TOP) (S64V:Canadian)
*	3-387-184-01	CUSHION (BOTTOM) (S64V:Canadian)
	3-756-196-31	MANUAL, INSTRUCTION (ENGLISH, FRENCH) (S64V:Canadian)

3. CORRECTION

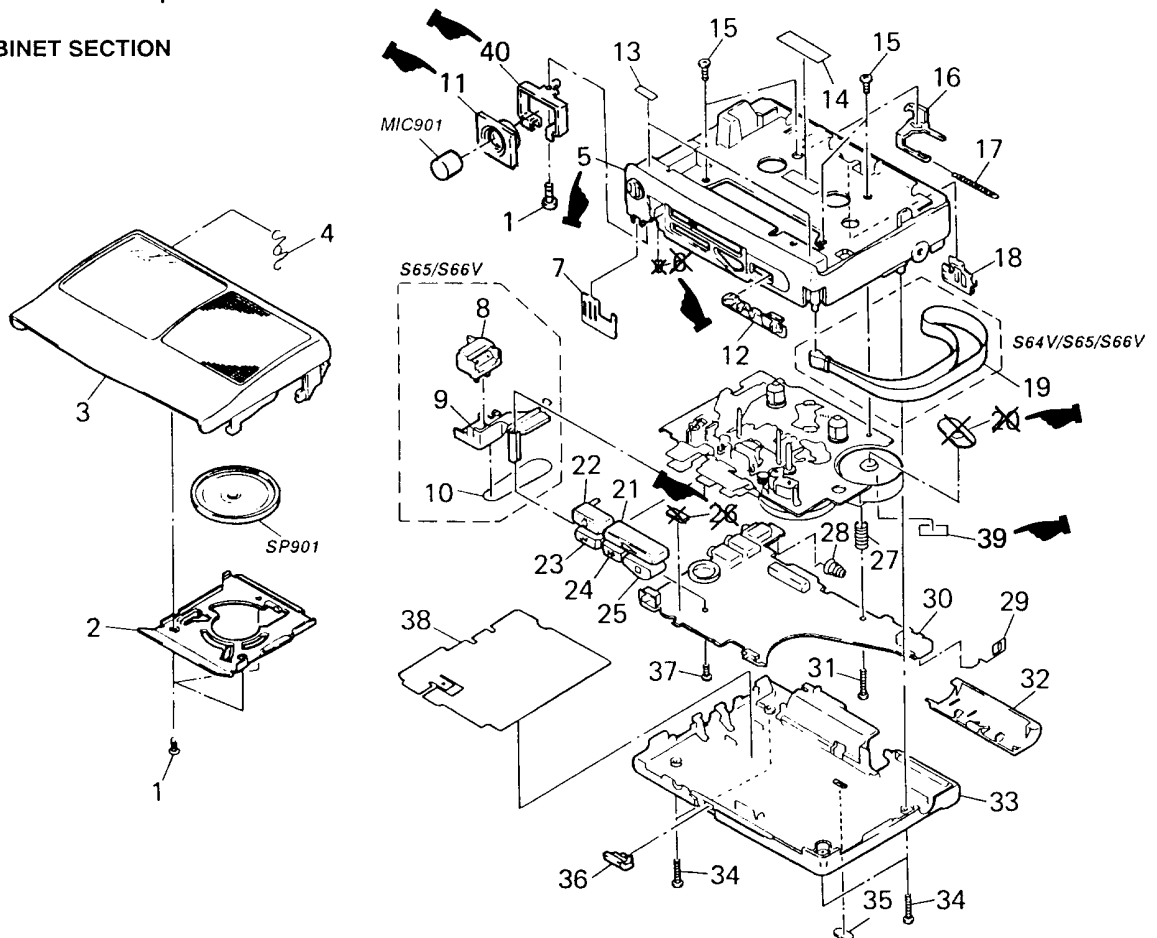
Correct your service manual as shown below.

EXPLODEED VIEWS

Page 9

✶ : Corrected portion

CABINET SECTION



EXPLODED VIEWS PARTS LIST

Page 9

Ref. No.	Incorrect		Correct	
	Part No.	Description	Part No.	Description
5	3-385-886-01	CABINET (FRONT) (S63:US)	3-385-886-01	CABINET (FRONT) (S63:US)
	3-385-886-11	CABINET (FRONT) (S64V:US)	3-385-886-11	CABINET (FRONT) (S64V:US, Canadian)
	3-385-886-21	CABINET (FRONT) (S65)	3-385-886-21	CABINET (FRONT) (S65:Canadian)
	3-385-886-31	CABINET (FRONT) (S66V)	3-385-886-31	CABINET (FRONT) (S66V:US, Canadian, Tourist)
			3-385-886-61	CABINET (FRONT) (S63:E, Saudi Arabia)
			3-385-886-71	CABINET (FRONT) (S64V:E, Saudi Arabia)
			3-385-886-82	CABINET (FRONT) (S65:AEP, UK)
			3-385-886-92	CABINET (FRONT) (S66V:AEP, UK)
6	*3-389-321-01	CUSHION (GND)		
11	3-385-873-01	CUSHION (MICROPHONE NOM)	3-320-975-01	CUSHION (A), MICROPHONE
20	*3-389-320-01	SHEET, MOTOR		
26	*3-385-856-01	CUSHION (LED)		
39			*3-386-313-01	CUSHION (BATTERY CASE LID)
40			*3-904-756-02	BRACKET (M CUSHION)

ACCESSORIES & PACKING MATERIALS

Page 14

Ref. No.	Incorrect		Correct	
	Part No.	Description	Part No.	Description
	*3-387-157-01	CUSHION (S63:E, Saudi Arabia, S65, S66V:AEP, UK)	*3-387-157-01	CUSHION (S63:E, Saudi Arabia/S64V:E, Saudi Arabia, S65, S66V:Canadian, AEP, UK, Tourist)
	*3-387-183-01	CUSHION (TOP) (S63, S64V:US)	*3-387-183-01	CUSHION (TOP) (S63:US, S64V:US, Canadian)
			*3-387-222-01	CUSHION (TOP) (S66V:US)
	*3-387-184-01	CUSHION (BOTTOM) (S63, S64V:US)	*3-387-184-01	CUSHION (BOTTOM) (S63:US, S64V:US, Canadian)
			*3-387-223-01	CUSHION (BOTTOM) (S66V:US)
	*3-387-163-01	INDIVIDUAL CARTON (S65:AEP, UK)	*3-387-156-01	INDIVIDUAL CARTON (S63:E, Saudi Arabia)
	*3-387-167-01	INDIVIDUAL CARTON (S66V:AEP, UK)	*3-387-159-01	INDIVIDUAL CARTON (S64V:E, Saudi Arabia)
			*3-387-161-01	INDIVIDUAL CARTON (S65:Canadian)
			*3-387-163-01	INDIVIDUAL CARTON (S65:AEP, UK)
			*3-387-165-01	INDIVIDUAL CARTON (S66V:Canadian)
			*3-387-167-01	INDIVIDUAL CARTON (S66V:AEP, UK)
			*3-387-169-01	INDIVIDUAL CARTON (S66V:Tourist)