

# TCM-929/939

## SERVICE MANUAL

Ver. 1.1 2006.05



Photo: TCM-939

*US Model*  
TCM-929  
*Canadian Model*  
*AEP Model*  
*UK Model*  
*E Model*  
*Australian Model*  
TCM-939

Model Name Using Similar Mechanism	TCM-919
Tape Transport Mechanism Type	MT-929

### SPECIFICATIONS

#### Recording system

2-track 1 channel monaural

#### Frequency range

150 - 8,000 Hz

#### Speaker

Approx. 6.6 cm (2 $\frac{5}{8}$  in.) dia.

#### Power output

400 mW (at 10 % harmonic distortion)

#### Input

Microphone input jack (minijack) sensitivity 0.775 mV for low impedance microphone

#### Output

Earphone jack (minijack) for 8 - 300 ohms earphone

#### Power requirements

- Four size AA (R6) batteries (not supplied): 6V DC
- DC IN 6 V jack accepts:  
Supplied AC power adaptor suitable in the country where the unit is to be used.

#### Dimensions (w/h/d) (incl. projecting parts and controls)

Approx. 144 × 60 × 237 mm  
(5  $\frac{3}{4}$  × 2  $\frac{3}{8}$  × 9  $\frac{3}{8}$  in.)

#### Mass (not incl. batteries)

Approx. 675 g (23.9 oz.)

#### Supplied accessories

AC power adaptor (1)  
(US, Canadian and European model only)

Design and specifications are subject to change without notice.

9-960-332-12  
2006E05-1  
© 2006.05

**Sony Corporation**  
Personal Audio Division  
Published by Sony Techno Create Corporation

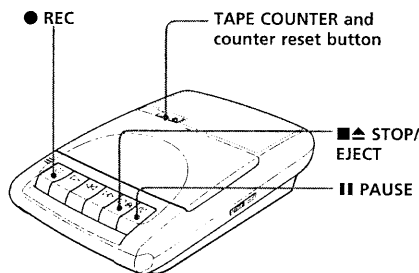
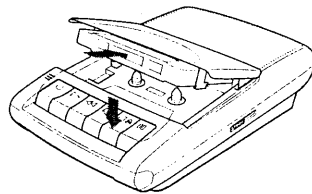
CASSETTE CORDER  
**SONY**®

## SECTION 1 GENERAL

This section is extracted from instruction manual.

### Recording

You can record right away with the built-in microphone. Make sure that nothing is connected to the MIC jack.



- 1 Press the counter reset button to reset the TAPE COUNTER.
- 2 Press ■▲ STOP/EJECT to open the cassette holder.
- 3 Insert a TYPE I (normal) tape with the side to start recording facing upward, and close the cassette holder.
- 4 Press ● REC.  
▶ PLAY is depressed automatically.

At the end of the tape, recording stops and the unit turns off automatically.

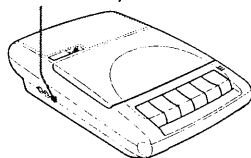
To	Press
Stop recording	■▲ STOP/EJECT
Pause recording	PAUSE Press the button again to resume recording.

#### Notes

- You cannot monitor the recording sound.
- For recording, we recommend the use of TYPE I (normal) tapes only. Do not use TYPE II (CrO<sub>2</sub>) and TYPE IV (metal) tapes.

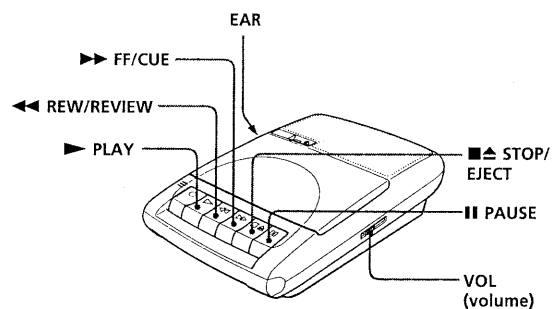
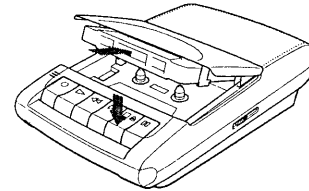
### Recording with an External Microphone

MIC (PLUG IN POWER)



Connect a microphone of low impedance (not supplied) to the MIC jack. The built-in microphone is automatically disconnected. When using a plug-in-power system microphone, the power to the microphone is supplied from this unit.

### Playing a Tape



- 1 Press ■▲ STOP/EJECT to open the cassette holder.
- 2 Insert a TYPE I (normal) tape with the side to start play facing upward, and close the cassette holder.
- 3 Press ▶ PLAY then adjust the volume.

At the end of the tape, playback stops and the unit turns off automatically.

To	Press or slide
Stop playback/stop fast forward or rewind	■▲ STOP/EJECT
Pause playback	PAUSE Press the button again to resume play.
Search forward during playback (CUE)	Press and hold ►► FF/CUE and release it at the point you want
Search backward during playback (REVIEW)	Press and hold ◄◄ REW/REVIEW and release it at the point you want
Fast forward	►► FF/CUE during stop
Rewind	◄◄ REW/REVIEW during stop

#### At the end of the tape

All the locked buttons will be automatically released (Full auto shut-off mechanism).

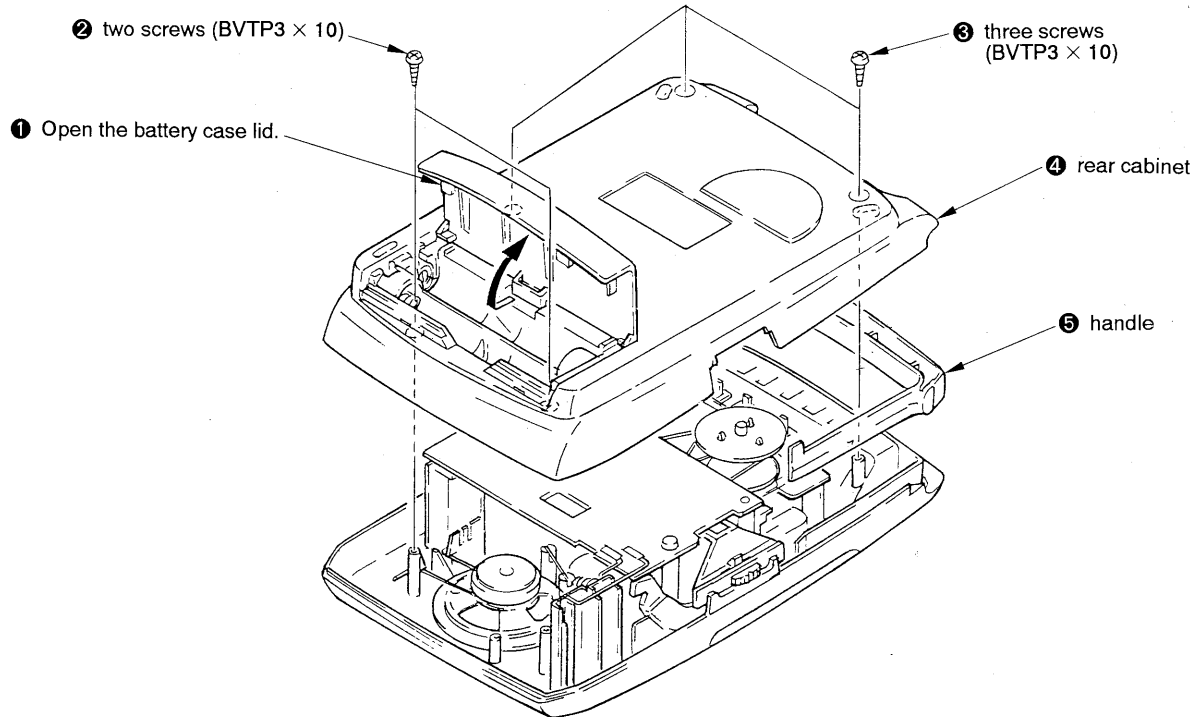
#### To listen with an earphone

Connect an earphone (not supplied) to the EAR jack of the unit. The built-in speaker will be automatically disconnected.

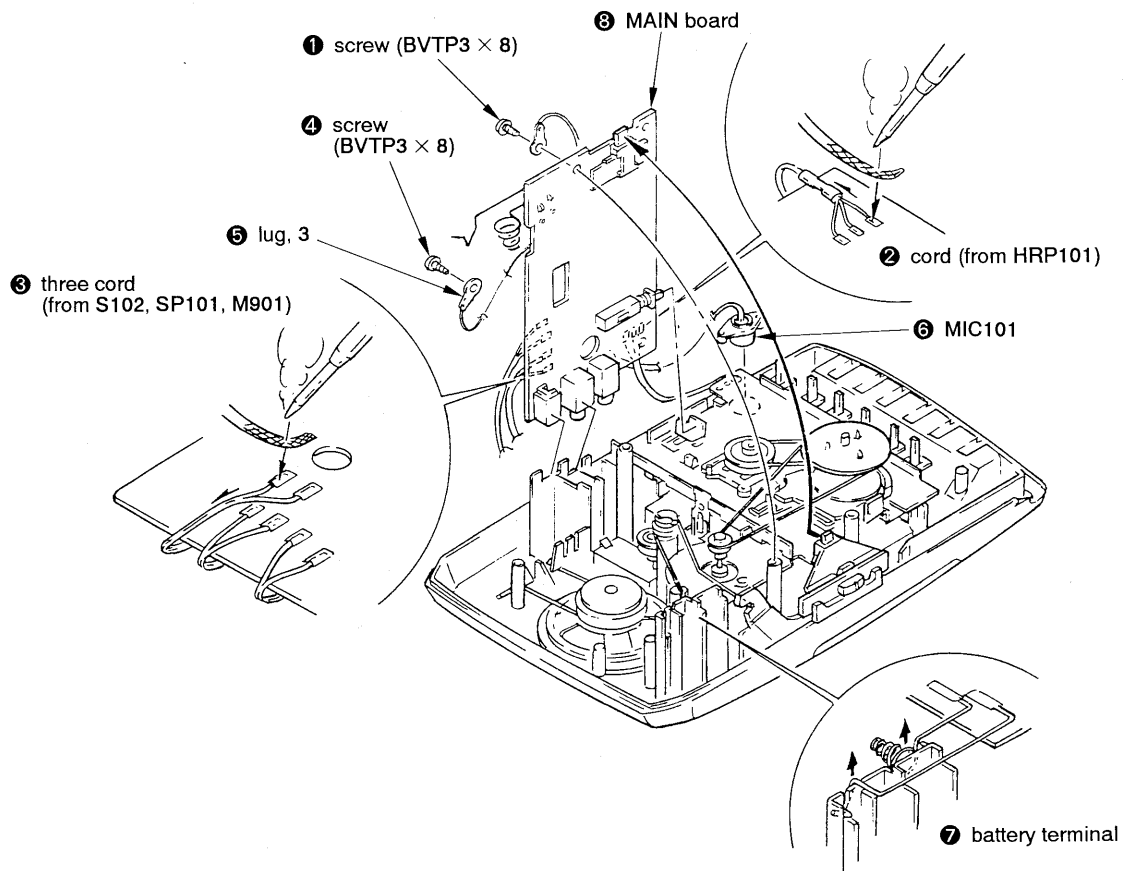
## SECTION 2 DISASSEMBLY

**Note:** Follow the disassembly procedure in the numerical order given.

### REAR CABINET



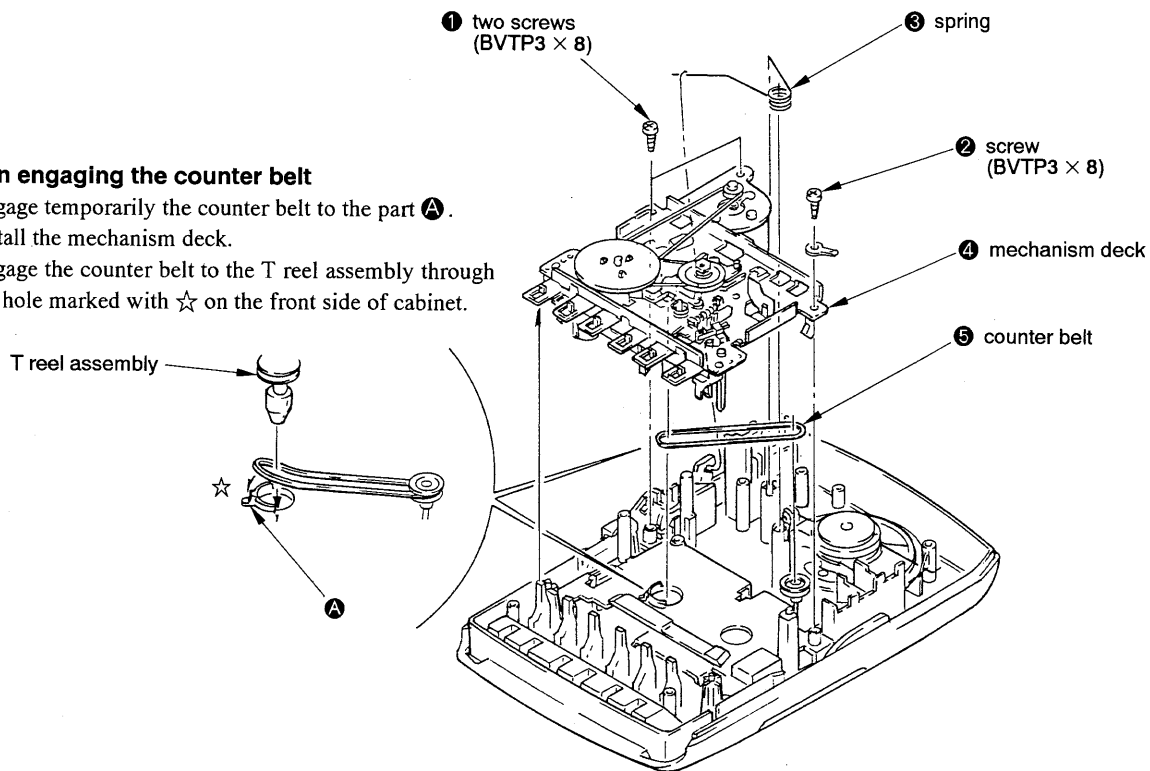
### MAIN BOARD



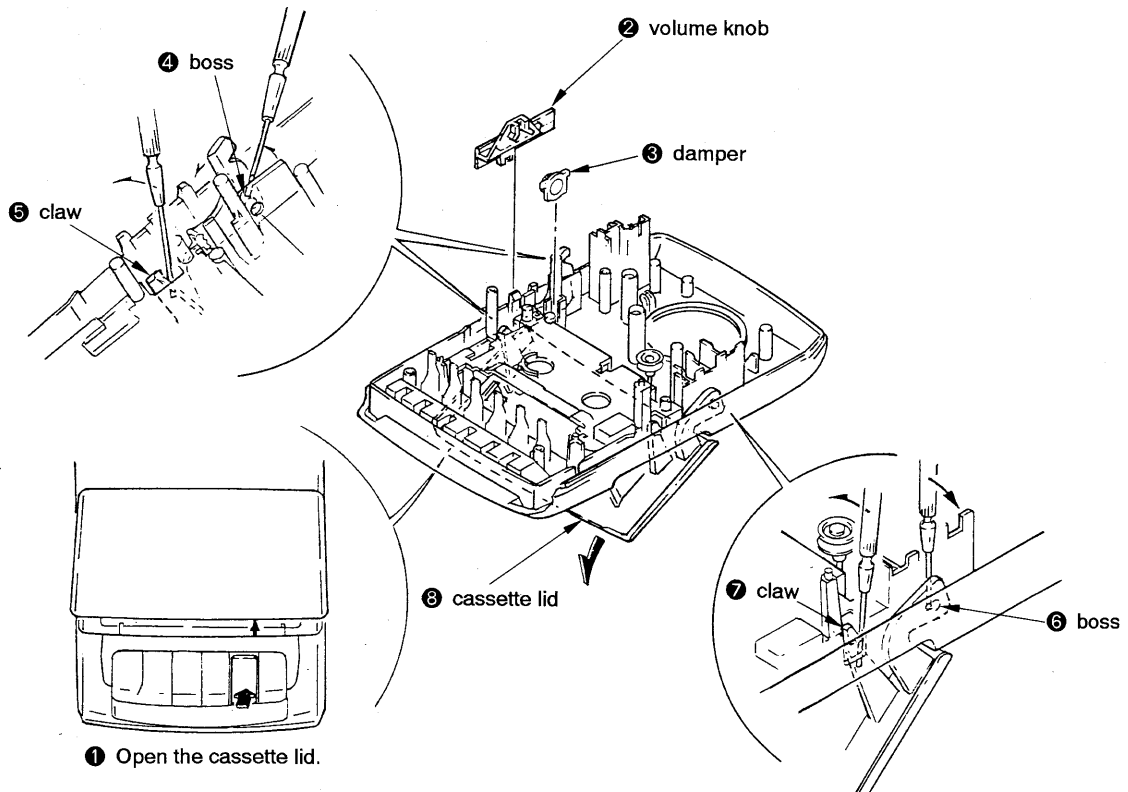
## MECHANISM DECK

### Note on engaging the counter belt

1. Engage temporarily the counter belt to the part **A**.
2. Install the mechanism deck.
3. Engage the counter belt to the T reel assembly through the hole marked with ☆ on the front side of cabinet.



## CASSETTE LID



SECTION 3  
ADJUSTMENTS

3-1. MECHANICAL ADJUSTMENT

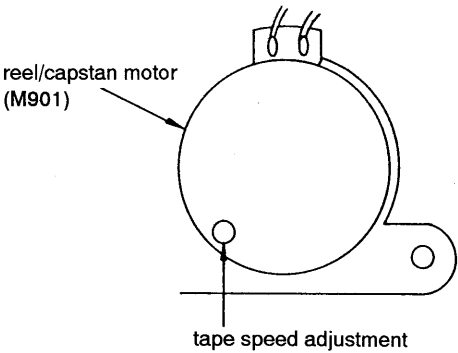
PRECAUTION

- 1. Clean the following parts with a denatured-alcohol-moistened swab:  
record/playback head      pinch roller  
erase head                  rubber belts  
capstan
- 2. Demagnetize the record/playback head with a head demagnetizer.
- 3. Do not use a magnetized screwdriver for the adjustments.
- 4. After the adjustments, apply suitable locking compound to the parts adjusted.
- 5. The adjustments should be performed in the rated power supply voltage unless otherwise noted.

Torque Measurement

Torque	Torque meter	Meter reading
FWD	CQ-102C	27 to 70 g•cm (0.37 to 0.98 oz•inch)
FWD Back tension	CQ-102C	1.5 to 5.5 g•cm (0.02 to 0.07 oz•inch)
FF, REW	CQ-201B	80 to 156 g•cm (1.12 to 2.1 oz•inch)

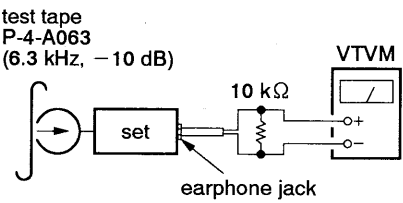
Adjustment Location: Reel/Capstan Motor (M901)



Record/Playback Head Azimuth Adjustment

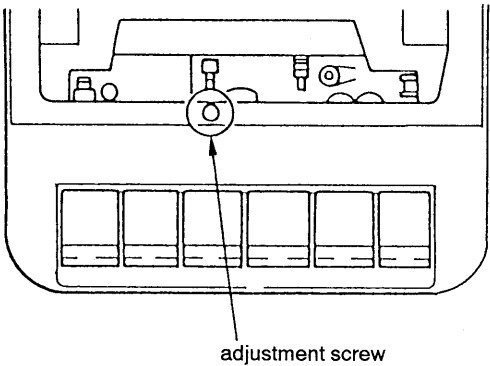
Setting:  
VOL control: mechanical mid.

- Adjustment Procedure:
- 1. Mode: Playback



- 2. Turn the adjustment screw for maximum VTVM reading.
- Note:** Serval peaks may appear, but take the the maximum.
- 3. After the adjustment, lock the screws with locking compound.

Adjustment Location: Record/Playback Head

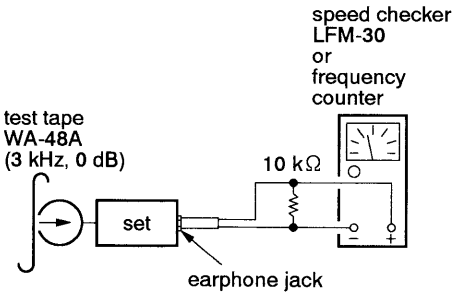


3-2. ELECTRICAL ADJUSTMENTS

Tape Speed Adjustment

Setting:  
VOL control: mechanical mid.

- Adjustment Procedure:
- 1. Mode: Playback



Specification:

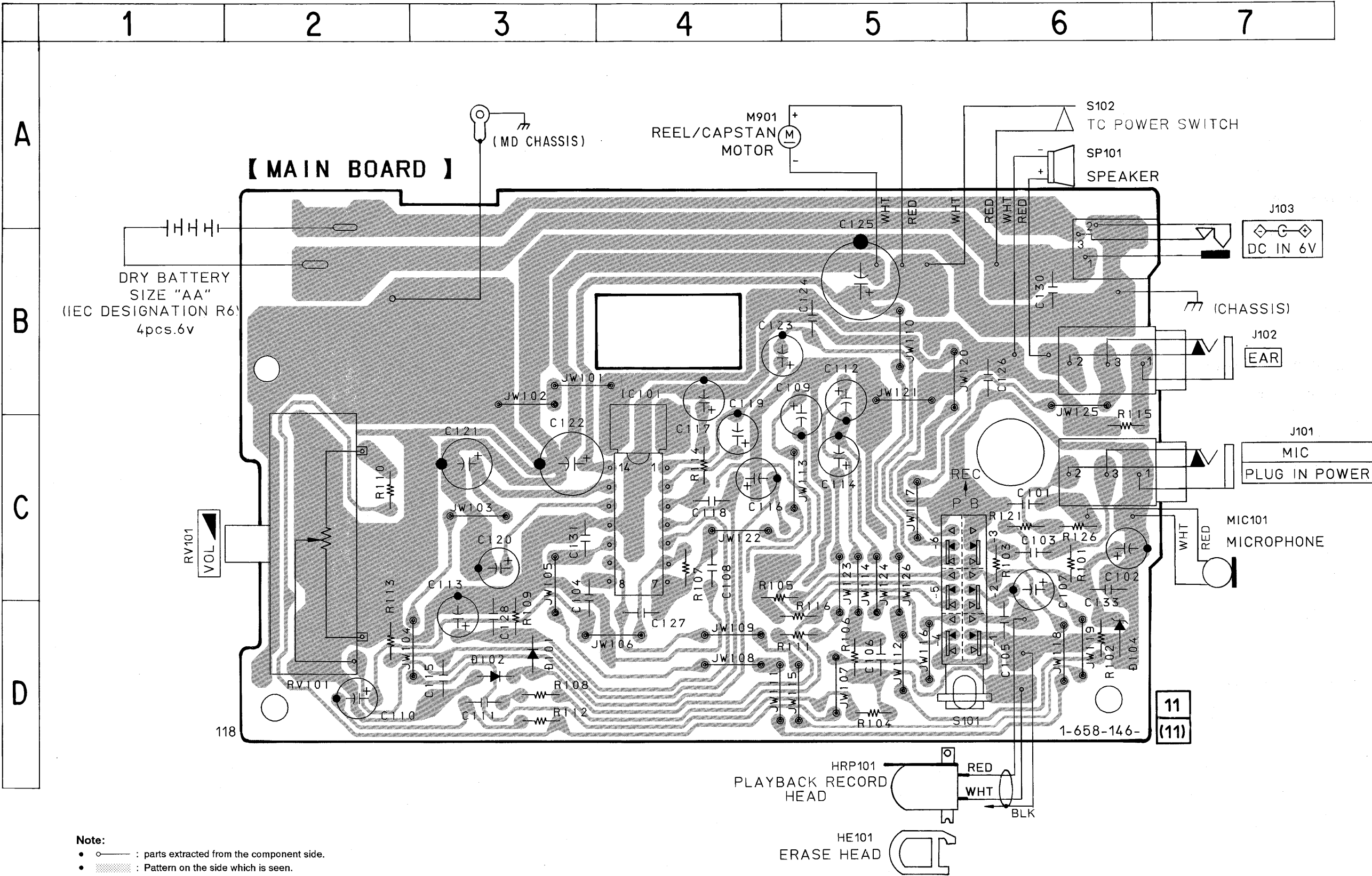
Speed checker	Frequency counter
± 3%	2,910 to 3,090 Hz

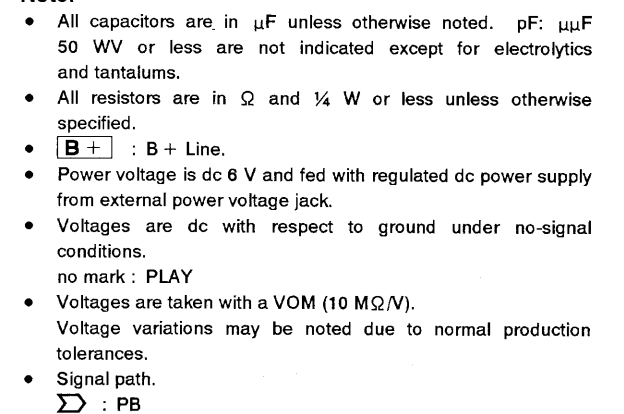
SECTION 4  
DIAGRAMS

4-1. PRINTED WIRING BOARD

• Semiconductor  
Location

Ref. No.	Location
D101	D-3
D102	D-3
D104	D-6
IC101	C-4



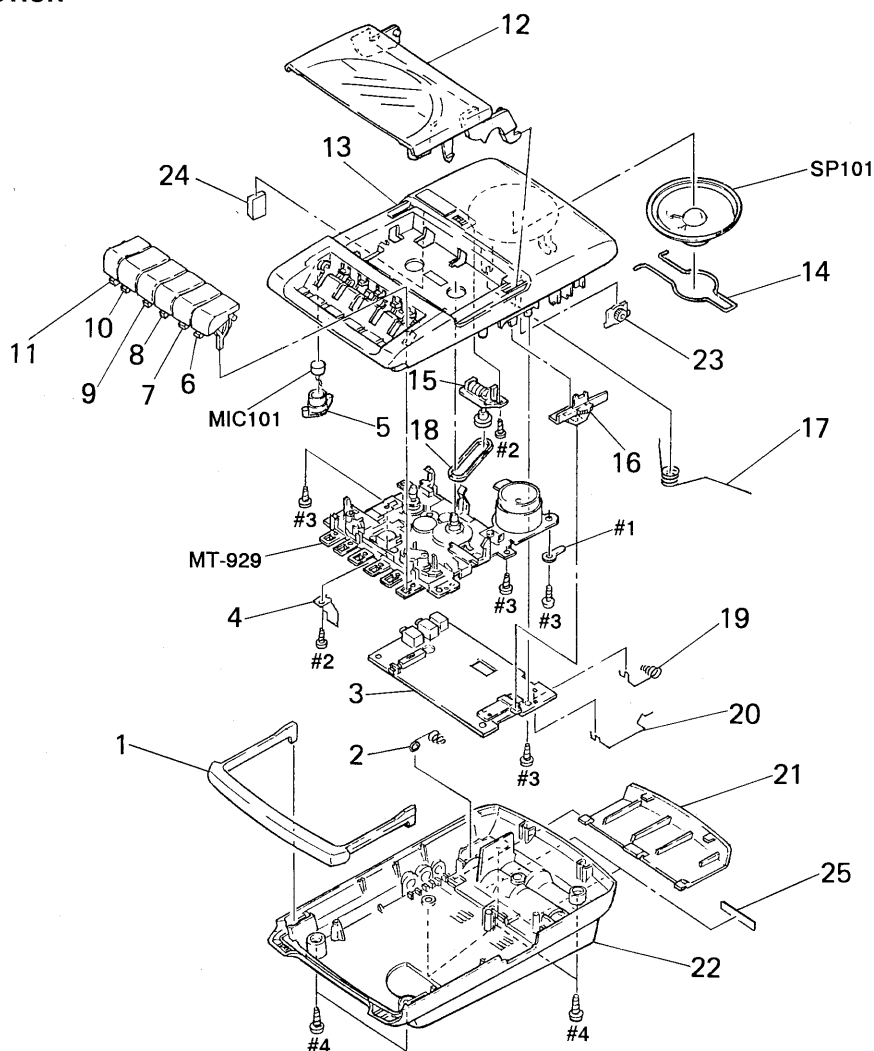


## EXPLODED VIEWS

NOTE:

- Hardware (# mark) list and accessories and packing materials are given in the last of the electrical parts list.

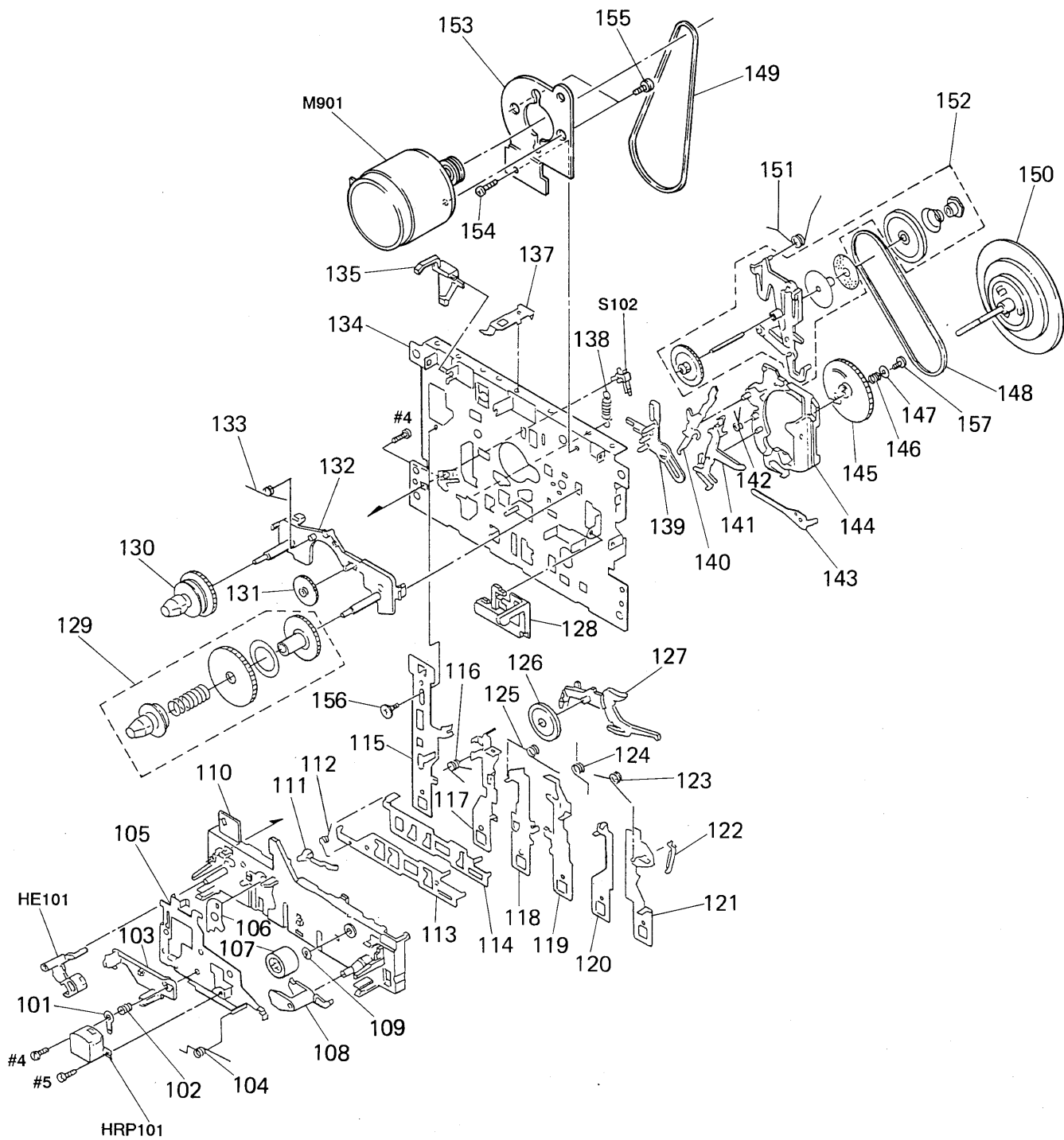
**(1) CABINET SECTION**



Ref. No.	Part No.	Description	Remark	Ref. No.	Part No.	Description	Remark
1	3-928-051-01	HANDLE		15	1-251-348-11	COUNTER, TAPE	
2	3-927-954-01	TERMINAL (+, -), BATTERY		16	3-927-968-01	KNOB (VOL)	
* 3	A-3061-174-A	MAIN BOARD, COMPLETE		17	3-927-960-01	SPRING (CASSETTE)	
4	3-927-955-01	LEVER, REC		18	3-927-957-01	BELT, COUNTER	
* 5	3-348-316-01	CUSHION, MICROPHONE		19	3-927-958-01	TERMINAL (-), BATTERY	
6	3-927-963-01	BUTTON (PAUSE)		20	3-927-959-01	TERMINAL (+), BATTERY	
7	3-927-964-01	BUTTON (STOP)		21	3-927-961-01	LID, BATTERY CASE	
8	3-927-965-01	BUTTON (FF)		22	3-927-970-01	CABINET (REAR) (929)	
9	3-927-966-01	BUTTON (REW)		22	3-927-970-11	CABINET (REAR) (939:Canadian)	
10	3-927-967-01	BUTTON (PLAY)		22	3-927-970-21	CABINET (REAR) (939:AEP, UK, E, Australian)	
11	3-927-962-01	BUTTON (REC)		23	3-928-052-01	DAMPER	
12	3-927-969-01	LID, CASSETTE (929)		24	3-930-739-01	PLATE REINFORCE	
12	X-3370-892-1	LID ASSY, CASSETTE (939)		25	3-930-740-01	CUSHION	
13	3-927-971-01	CABINET (FRONT)		MIC101	8-814-186-00	MICROPHONE, ELECTRET CONDENSER	
14	3-927-956-01	SPRING (SPEAKER)		SP101	1-504-970-11	SPEAKER (6.6CM)	



(2) MECHANISM DECK SECTION  
(MT-929)



Ref. No.	Part No.	Description	Remark	Ref. No.	Part No.	Description	Remark
101	3-363-230-01	LUG		132	3-362-961-01	SPINDLE (BASE)	
102	3-362-985-01	SPRING		133	3-372-120-01	SPRING	
103	3-362-986-01	HOLDER, HEAD		* 134	3-362-941-01	CHASSIS	
104	3-362-983-01	SPRING		135	3-385-825-01	INTERLOCK	
* 105	3-362-984-01	HEAD (BASE)					
106	3-385-832-01	LINK, CR		137	3-362-967-01	SPRING, CASSETTE	
107	3-362-982-01	PINCH ROLLER		138	3-362-971-01	SPRING	
108	3-362-981-01	PINCH ARM		139	3-362-972-01	SENSOR	
109	3-362-980-01	WASHER		140	3-362-976-01	LEVER, CONTROL	
110	3-385-819-01	FRAME ASSY		141	3-362-975-01	LEVER, SENSOR	
111	3-385-831-01	ARM, CR		142	3-362-977-01	SPRING	
112	3-385-821-01	SPRING		143	3-362-978-01	SPRING, PLATE	
113	3-385-820-01	PLATE, FUNCTION		144	3-362-973-01	AS (BASE)	
114	3-385-822-01	LEVER, SW		145	X-3363-315-1	GEAR, CAM ASSY	
* 115	3-362-947-01	LEVER, REC		146	3-369-962-01	SPRING, COMPRESSION	
116	3-362-954-01	SPRING		147	3-369-961-01	WASHER	
* 117	3-362-948-01	LEVER, PLAY		148	3-385-829-01	BELT	
* 118	3-362-949-01	LEVER, REW		149	3-928-053-01	BELT (Y TYPE)	
* 119	3-362-950-01	LEVER, FF		150	3-385-827-01	FW ASSY	
120	3-385-824-01	LEVER, SE		151	3-362-970-01	SPRING	
* 121	3-362-952-01	LEVER, PAUSE		152	3-385-826-01	IDLER ASSY, PF	
122	3-362-953-01	ARM, PAUSE		* 153	3-385-828-01	HOLDER, MOTOR	
123	3-362-957-01	SPRING		154	3-363-229-01	SCREW	
124	3-362-956-01	SPRING		155	3-385-830-01	SCREW	
125	3-362-955-01	SPRING		156	3-362-958-01	SCREW	
126	3-362-960-01	PULLEY, IDLER		157	3-366-352-01	SCREW	
127	3-362-959-01	ARM, IDLER		HE101	1-500-009-11	HEAD, MAGNETIC (ERASE)	
128	3-362-968-01	LEVER, EJECT		HRP101	1-500-679-11	HEAD, MAGNETIC (RECORD.PLAYBACK) (New Type)	
129	3-362-962-01	REEL ASSY, T		HRP101	1-543-410-11	HEAD, MAGNETIC (REC/PB) (Former Type)	
130	X-3363-611-1	REEL, S ASSY		M901	X-3366-071-1	MOTOR ASSY (REEL/CAPSTAN)	
131	3-362-965-01	IDLER, FF		S102	1-572-538-11	SWITCH, LEAF (TC POWER)	

#### NOTE OF INSTALLATION OF HRP101

There are two kinds of types in HRP101. Because an installation direction of a lead wire is different from a former type by a new type, please install a lead wire like chart below.

Former Type (Part No. 1-543-410-11)	New Type (Part No. 1-500-679-11)
 <p>RED</p> <p>HRP101</p> <p>WHITE</p>	 <p>WHITE</p> <p>HRP101</p> <p>RED</p>

## SECTION 6

### ELECTRICAL PARTS LIST

## NOTE:

- Due to standardization, replacements in the parts list may be different from the parts specified in the diagrams or the components used on the set.
- -XX and -X mean standardized parts, so they may have some difference from the original one.
- RESISTORS  
All resistors are in ohms.  
METAL: Metal-film resistor.  
METAL OXIDE: Metal oxide-film resistor.  
F: nonflammable
- Model name abbreviation  
929: TCM-929  
939: TCM-939

- Items marked "\*" are not stocked since they are seldom required for routine service. Some delay should be anticipated when ordering these items.
- SEMICONDUCTORS  
In each case, u:  $\mu$ , for example:  
uA...:  $\mu$ A.. uPA...:  $\mu$ PA..  
uPB...:  $\mu$ PB.. uPC...:  $\mu$ PC.. uPD...:  $\mu$ PD..
- CAPACITORS  
uF:  $\mu$ F
- COILS  
uH:  $\mu$ H

When indicating parts by reference number, please include the board.

The components identified by mark  $\Delta$  or dotted line with mark  $\Delta$  are critical for safety. Replace only with part number specified.

Les composants identifiés par une marque  $\Delta$  sont critiques pour la sécurité. Ne les remplacer que par une pièce portant le numéro spécifié.

Ref. No.	Part No.	Description	Remark	Ref. No.	Part No.	Description	Remark
*	A-3061-174-A	MAIN BOARD, COMPLETE					
		*****					
		< CAPACITOR >				< DIODE >	
C101	1-161-051-00	CERAMIC	0.01uF 10% 25V	D101	8-719-049-26	DIODE RB721Q	
C102	1-126-933-11	ELECT	100uF 20% 10V	D102	8-719-049-26	DIODE RB721Q	
C103	1-161-772-11	CERAMIC	0.1uF 20% 16V	D104	8-719-982-51	DIODE MTZJ-T-73-3.0	
C104	1-102-108-00	CERAMIC	150PF 10% 50V			< IC >	
C105	1-161-043-00	CERAMIC	2200PF 10% 50V	IC101	8-759-821-14	IC LA4160	
C106	1-161-047-00	CERAMIC	0.0047uF 10% 50V			< JACK >	
C107	1-126-963-11	ELECT	4.7uF 20% 50V	J101	1-566-740-11	JACK (MIC, PLUG IN POWER)	
C108	1-102-114-00	CERAMIC	470PF 10% 50V	J102	1-566-740-11	JACK (EAR)	
C109	1-126-963-11	ELECT	4.7uF 20% 50V	J103	1-568-907-31	JACK, DC (POLARITY UNIFEID TYPE) (DC IN 6V)	
C110	1-126-963-11	ELECT	4.7uF 20% 50V			< RESISTOR >	
C111	1-161-055-00	CERAMIC	0.022uF 10% 50V	R101	1-249-427-11	CARBON 6.8K 5% 1/4W	
C112	1-126-963-11	ELECT	4.7uF 20% 50V	R102	1-249-423-11	CARBON 3.3K 5% 1/4W	
C113	1-126-963-11	ELECT	4.7uF 20% 50V	R103	1-247-839-31	CARBON 2.2K 5% 1/4W	
C114	1-126-963-11	ELECT	4.7uF 20% 50V	R104	1-249-433-11	CARBON 22K 5% 1/4W	
C115	1-161-043-51	CERAMIC	2200PF 10% 50V	R105	1-249-403-11	CARBON 68 5% 1/4W	
C116	1-126-963-11	ELECT	4.7uF 20% 50V	R106	1-247-852-11	CARBON 7.5K 5% 1/4W	
C117	1-126-933-11	ELECT	100uF 20% 10V	R107	1-249-437-11	CARBON 47K 5% 1/4W	
C118	1-102-074-00	CERAMIC	0.001uF 10% 50V	R108	1-249-427-11	CARBON 6.8K 5% 1/4W	
C119	1-126-967-11	ELECT	47uF 20% 10V	R109	1-247-891-00	CARBON 330K 5% 1/4W	
C120	1-128-551-11	ELECT	22uF 20% 25V	R110	1-249-417-11	CARBON 1K 5% 1/4W	
C121	1-126-923-11	ELECT	220uF 20% 10V	R111	1-249-417-11	CARBON 1K 5% 1/4W	
C122	1-126-925-11	ELECT	470uF 20% 10V	R112	1-249-417-11	CARBON 1K 5% 1/4W	
C123	1-126-923-11	ELECT	220uF 20% 10V	R113	1-249-433-11	CARBON 22K 5% 1/4W	
C124	1-161-772-11	CERAMIC	0.1uF 10% 25V	R114	1-249-403-11	CARBON 68 5% 1/4W	
C125	1-126-926-11	ELECT	1000uF 20% 10V	R115	1-249-403-11	CARBON 68 5% 1/4W	
C126	1-101-880-00	CERAMIC	47PF 10% 50V	R116	1-247-825-31	CARBON 560 5% 1/4W	
C127	1-102-106-00	CERAMIC	100PF 10% 50V	R121	1-249-417-11	CARBON 1K 5% 1/4W	
C128	1-102-114-00	CERAMIC	470PF 10% 50V	R126	1-247-823-31	CARBON 470 5% 1/4W	
C130	1-161-055-00	CERAMIC	0.022uF 10% 50V			< VARIABLE RESISTOR >	
C131	1-101-880-00	CERAMIC	47PF 10% 50V	RV101	1-223-955-11	RES, VAR, SLIDE (VOL)	
C133	1-161-051-00	CERAMIC	0.01uF 10% 25V				

REVISED

MAIN

Ref. No.	Part No.	Description	Remark
----------	----------	-------------	--------

< SWITCH >

S101 1-762-546-11 SWITCH, SLIDE (PB/REC SWITCH)

\*\*\*\*\*

MISCELLANEOUS

\*\*\*\*\*

15 1-251-348-11 COUNTER, TAPE  
HE101 1-500-009-11 HEAD, MAGNETIC (ERASE)  
HRP101 1-543-410-11 HEAD, MAGNETIC (REC/PB)  
M901 X-3366-071-1 MOTOR ASSY (REEL/CAPSTAN)  
MIC101 8-814-186-00 MICROPHONE, ELECTRET CONDENSER

SP101 1-504-970-11 SPEAKER (6.6CM)  
S102 1-572-538-11 SWITCH, LEAF (TC POWER)

\*\*\*\*\*

ACCESSORIES & PACKING MATERIALS

\*\*\*\*\*

△ 1-466-977-11 ADAPTOR, AC (AC-E616) (929)  
△ 1-466-978-11 ADAPTOR, AC (AC-E616) (939:UK)  
△ 1-466-979-11 ADAPTOR, AC (AC-E616) (939:AEP)  
  
△ 1-467-198-11 ADAPTOR, AC (AC-E616) (939:Canadian)  
△ 1-467-894-11 ADAPTOR, AC (939:Australian)  
3-800-701-11 MANUAL, INSTRUCTION (ENGLISH) (929)  
3-800-730-11 MANUAL, INSTRUCTION (ENGLISH, FRENCH,  
SPANISH) (939)  
3-800-730-21 MANUAL, INSTRUCTION (GERMAN, DUTCH,  
SWEDISH) (939:AEP)  
3-800-730-31 MANUAL, INSTRUCTION (ITALIAN, POTUGUESE)  
(939:AEP, E)  
3-930-070-01 INDIVIDUAL CARTON (929)  
3-930-071-01 INDIVIDUAL CARTON (939 : Canadian)  
3-930-072-01 INDIVIDUAL CARTON (939 : AEP, UK)  
3-930-074-01 INDIVIDUAL CARTON (939 : Australian)  
3-930-075-01 INDIVIDUAL CARTON (939 : E)

\*\*\*\*\*

\*\*\*\*\*

HARDWARE LIST

\*\*\*\*\*

#1 7-623-508-01 LUG, 3  
#2 7-685-104-19 SCREW +P 2X6 TYPE2 NON-SLIT  
#3 7-685-646-79 SCREW +BVTP 3X8 TYPE2 N-S  
#4 7-685-647-79 SCREW +BVTP 3X10 TYPE2 N-S  
#5 7-621-255-25 SCREW +PTT 2X4 (S)

The components identified by  
mark △ or dotted line with  
mark △ are critical for  
safety. Replace only with  
part number specified.

Les composants identifiés  
par une marque △ sont  
critiques pour la sécurité.  
Ne les remplacer que par une pièce  
portant le numéro spécifié.

## REVISION HISTORY

Clicking the version allows you to jump to the revised page.

Also, clicking the version at the upper right on the revised page allows you to jump to the next revised page.

[illegible]