

SUPPLEMENT

No. 3
OCT. 1970

SUBJECT: PRODUCTION CHANGE

APPLICABLE SERIAL NO.: 13,001 and later (TC-266)
31,001 and later (TC-366)

The following mechanical parts is changed to prevent the supply reel shaft and the tension regulator drum from seizure. See Fig. 1 and 2.

CHANGED:

	Description	Part No.
Former	drum, tension regulator	3-472-163-00
New	drum ass'y, tension regulator (including drum, tension regulator felt, tension regulator)	X-34721-07 (3-472-163-02) 3-472-320

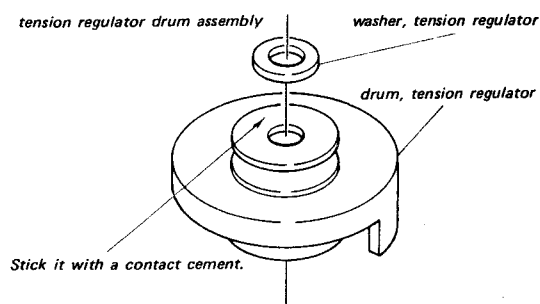


Fig. 1 Tension regulator drum assembly

NOTES:

1. Between the tension regulator drum and the table base plate assembly, put in a nylon washer with grease applied.
2. Apply a few drops of oil to the reel shaft.

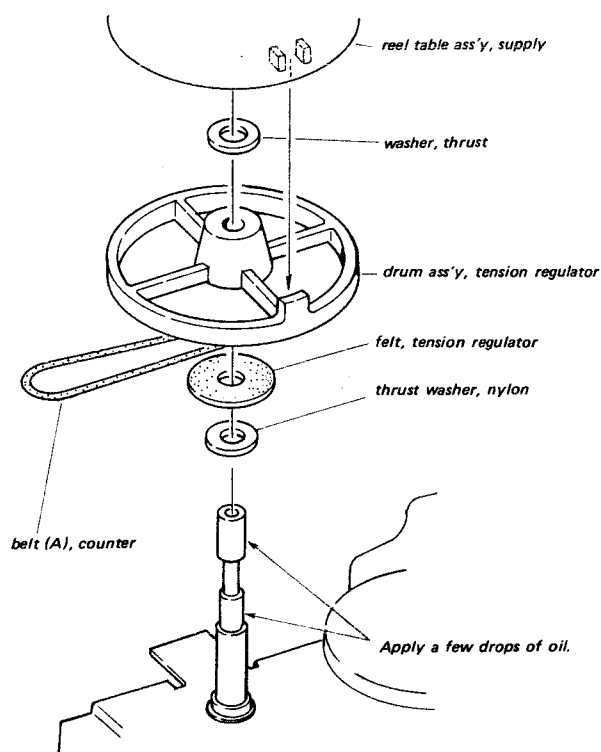


Fig. 2 Tension regulator drum installation

SONY CORPORATION