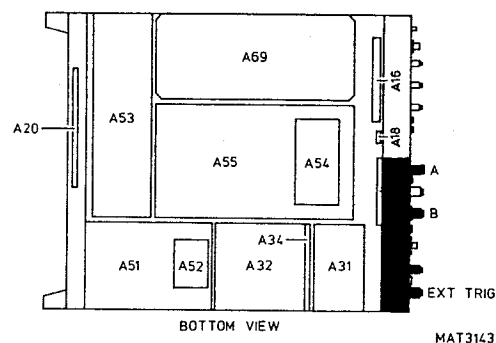


UNIT A57 - INPUT UNITCONTENTS

8.57.1	Description.....	8.57-1
8.57.2	Signal name list.....	8.57-1

8.57.1 Description

This unit consists of a metal profile on which the following input connectors are fitted:

Description	Connector type	Ref.nr.
A	N	X1
B	N	X2
EXT	BNC	X5
Ground	4 mm banana	X4

Next to the A and B connectors, the probe detection contacts are fitted. They are connected to X7003 on the Vertical signal unit A55. The two trigger pick-offs (unit A56) are fitted on the input connectors.

8.57.2 Signal name list

UNIT 57

Signal name	Description	Signal source	Signal destination(s)
A	Channel A	A57	A57-A69-A54
B	Channel B	A57	A56-A69-A54
EXT	External trigger	A57	A31
PRIF-A	Probe information A	A57	A55
PRIF-B	Probe information B	A57	A55

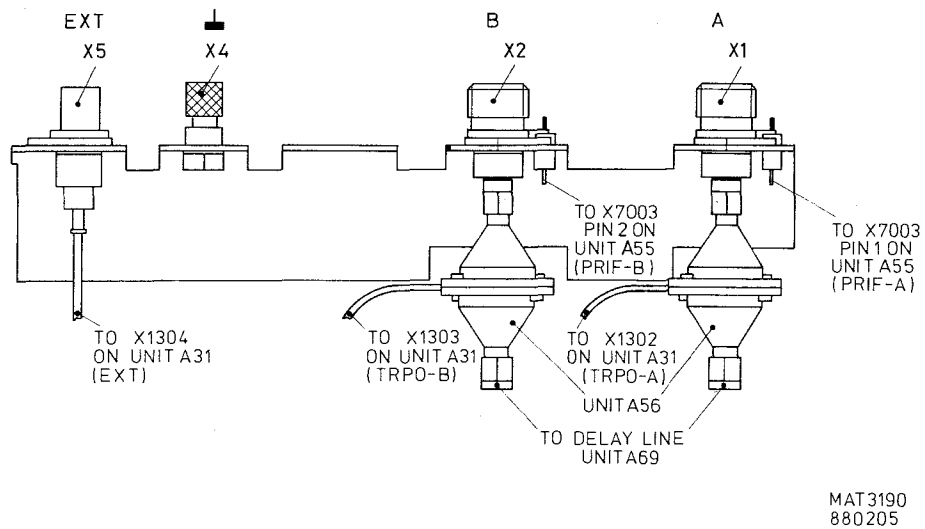


Figure 8.57.1 Unit A57 - INPUT UNIT - Lay-out.