

V3M  
VE-31MB  
VE-32MR



Model VE-31MB (Brown)  
Model VE-32MR (Maroon)



# RCA VICTOR



## MODELS

V3M RECORD PLAYER ATTACHMENT

VE31MB AND VE32MR

RECORD PLAYERS

## SERVICE DATA

— 1953 No. 13 —

HOME INSTRUMENT SERVICE DIVISION  
RCA VICTOR COMPANY, LTD  
MONTREAL, QUE.

## ELECTRICAL AND MECHANICAL SPECIFICATIONS

Turntable Speed .....33 $\frac{1}{3}$ , 45, 78 R.P.M.

Pickup .....Crystal (Medium)

### POWER SUPPLY RATING

115 Volts, 25 or 60 Cycles

Tube Complement .....(VE-31MB, VE-32MR)

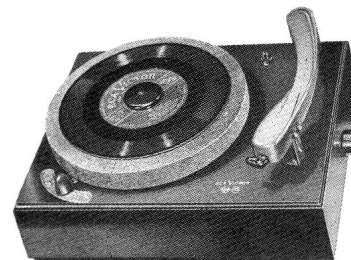
1. Type 50L6-GT .....Output

2. Type 35Z5-GT .....Rectifier

### LOUDSPEAKER

Size and Type .....4" P.M.

Voice Coil Impedance .....3.2 ohm at 400 Cycles



Model V3M  
Record Player Attachment

### CASE DIMENSIONS (Overall)

	VE32MR	V3M
Height .....	6"	3"
Depth .....	13"	9 $\frac{1}{2}$ "
Width .....	10 $\frac{1}{2}$ "	11 $\frac{7}{8}$ "

## REPLACEMENT PARTS FOR MODEL V3M—VE31MB AND VE32MR

Insist on Genuine Factory Tested Parts, which are readily identified and may be purchased from Authorized Dealers.

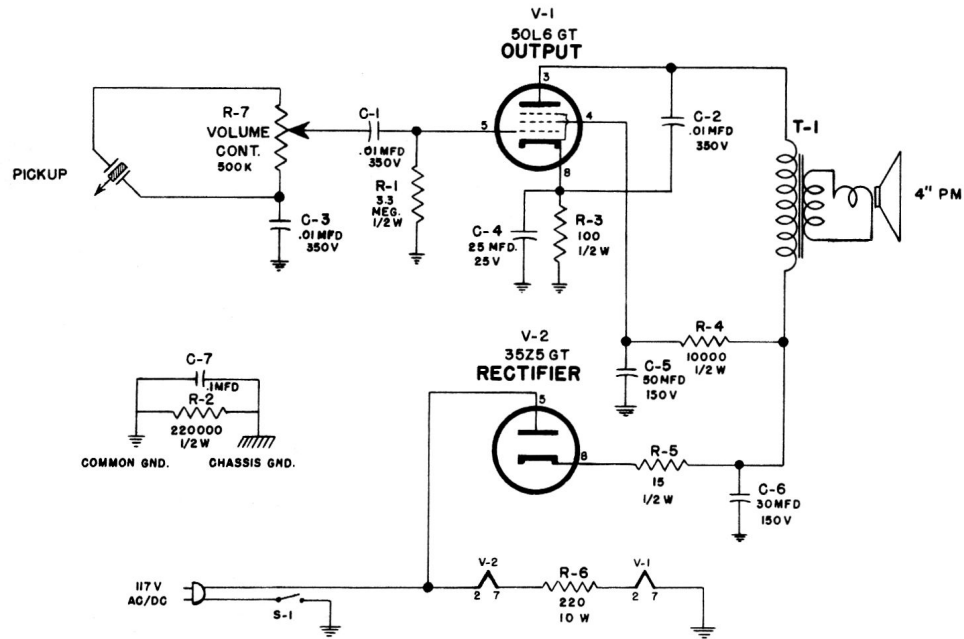
SYMBOL NO.	STOCK NO.	DESCRIPTION	SYMBOL NO.	STOCK NO.	DESCRIPTION
C-1		Capacitor .01 mfd. 350 V.			SPEAKER ASSEMBLY
C-2		Capacitor .01 mfd. 350 V.			
C-3		Capacitor .01 mfd. 350 V.			
C-4	*S-20089	Capacitor, Electrolytic 25 mfd. 25 V.			Speaker 4" P.M. complete with cone and voice Coil.
C-5	S-4419	Capacitor, " 40 x 40 mfd. 150 V.			MISCELLANEOUS ASSEMBLY
C-6		" " " "			
C-7		Capacitor, .1 mfd. 750 V.			
R-1		Resistor, 3.3 megohms, 10% 1/2 Watt			*S-20075 Crystal (Astatic)
R-2		Resistor, 220,000 ohms " 1/2 "			*S-20076 Crystal - Changeover Mechanism
R-3		Resistor, 100 ohms " 1/2 "			*S-20084 Decal - Speed Decal
R-4		Resistor, 10,000 ohms " 1/2 "			*S-20072 Knob - Vol. Control Knob
R-5		Resistor, 15 ohms " 1/2 "			*S-20077 Knob - Changeover Knob (33-45-78 RPM)
R-6		Resistor, 200 ohms 10 Watt			*S-20082 Motor - 60 cy. complete with motor change mechanism
R-7	S-5719	Volume control & Power Switch 500 K			*S-20083 Motor - 25 cycle complete with motor change mechanism.
T-1	S-4194	Transformer-Output			PLEASE REFER TO PAGE IX FOR ADDITIONAL PARTS INFORMATION.

(\*) Indicates New Stock Items.

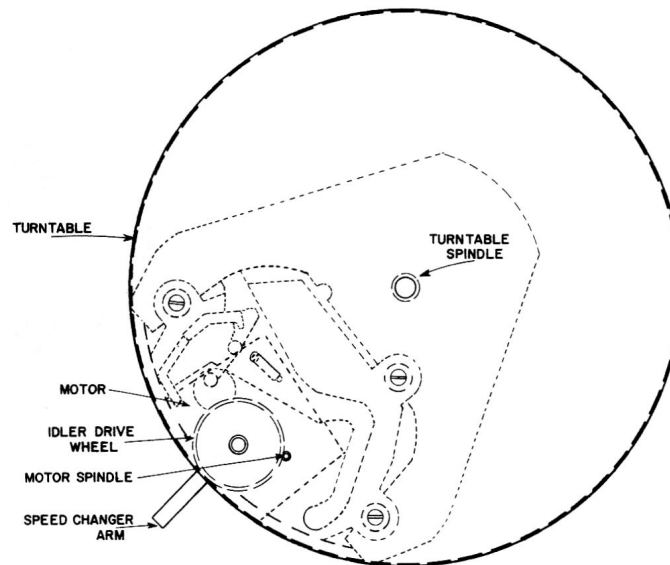
Only items listed under stock numbers are available as Replacement Parts.

All parts subject to change or withdrawal without notice.

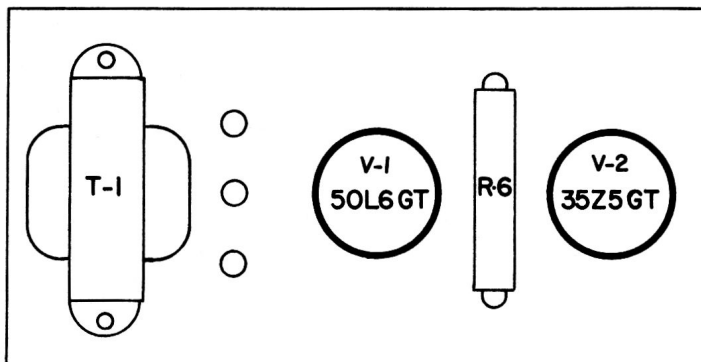
V3M  
VE-31MB  
VE-32MR



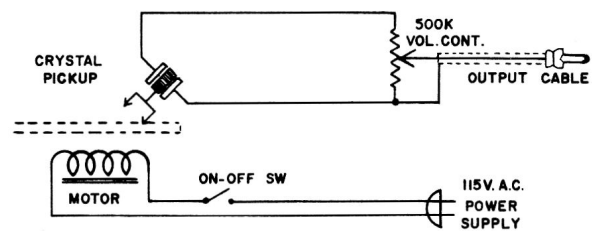
*Schematic Diagram*



*Top Mechanism View*



*Amplifier Top View*



*Phono Input Connection (V3M only)*