



# RCA VICTOR



MODEL RC-7

## AM TABLE CLOCK RADIO RECEIVER SERVICE DATA MODEL RC-7

### GENERAL INFORMATION

#### ELECTRICAL SPECIFICATIONS

**TUNING RANGE** ..... 540-1620 kc  
**INTERMEDIATE FREQUENCY** ..... 455 kc  
**TUBE COMPLEMENT**  
 (1) RCA 12BE6 ..... Converter  
 (2) RCA 12BA6 ..... IF Amplifier  
 (3) RCA 12AV6 ..... Detector, AVC, & Audio Amp.  
 (4) RCA 50C5 ..... Power Output  
 (5) RCA 35W4 ..... Rectifier

**POWER SUPPLY RATING**  
 110-120 volts, 50-60 cycles ..... 30 watts  
**AUDIO POWER OUTPUT**  
 Undistorted ..... 1.0 watts  
 Maximum ..... 1.3 watts  
**LOUDSPEAKER**  
 Size and Type ..... 4" PM  
 Voice coil impedance ..... 3.2 ohms  
**TUNING DRIVE RATIO** ..... 1:1 (Direct Drive)  
**NET WEIGHT** ..... Approx. 3 lbs.

### REPLACEMENT PARTS LIST

Insist on Genuine Factory Tested Parts, which are readily identified and may be purchased from Authorized Dealers.

SYMBOL	STOCK NO.	DESCRIPTION	SYMBOL	STOCK NO.	DESCRIPTION
CHASSIS ASSEMBLY					
C-1A, C-1B C-11A, C-11B	63-29782	Capacitor-Variable Tuning		62-106993	Clip-Retainer Clip Power Cord
	63-24464	Capacitor-Electrolytic 30/50 mfd. 150/150 volts		63-26698	Clip-Spring Clip Speaker Mtg.
L-1	63-27031	Coil-Antenna Coil and Back Cover Assembly		63-24774	Connector-Interlock
PC-1	63-25670	Plate-Printed Circuit Couplate Consists of: C-6, C-7, C-8, C-9, R-8, R-9 R-10		63-26342	Cord-Power Cord
PW-1	*63-7444	Board-Printed Board Assembled Less Tubes		63-27031	Cover-Back Cover
PW-1	63-27364	Board-Printed Board Stripped		63-27030	Crystal-Clock Crystal
R-6	63-29761	Control-Volume		62-109640	Emblem-RCA Victor (Cabinet Front)
T-1	63-24467	Transformer-1st IF Transformer		63-23180	Fastener-Timer Mtg.
T-2	63-22922	Transformer-2nd IF Transformer		63-27034	Hand-Time Set
T-3	63-110518	Transformer-Oscillator		63-29746	Hand-Second
T-4	63-25651	Transformer-Audio Output		*63-29848	Hand-Hour
		MISCELLANEOUS ASSEMBLY		*63-29849	Hand-Minute
	*63-29841	Cabinet-Antique White		63-27033	Instructions-Customer's Instruction Book
	*63-29842	Cabinet-Coral		63-110312	Knob-Volume/Tuning
	*63-29843	Cabinet-Spice Beige		63-29763	Overlay-Volume
	*63-29844	Cabinet-Sky Blue		63-29764	Overlay-Tuning
				63-24772	Retainer-Crystal Mtg.
				63-28180	Shaft-Extension Shaft Radio Timer
				63-24461	Socket-Tube 35W4
				63-24551	Socket-Tube 50C5
				63-24462	Socket-Tube 12BE6, 12BA6, 12AV6
				63-29062	Speaker-4" PM 3.2 ohms
				63-27032	Timer-Radio Timer

\* Indicates New Stock Items. Only items listed under stock numbers are available as Replacement Parts.

All parts subject to change or withdrawal without notice.

ISSUED BY

SERVICE DIVISION PUBLICATIONS  
 RCA VICTOR COMPANY, LTD.  
 MONTREAL, CANADA

Price 35c

1965 No. 16  
 Printed in Canada.

## ALIGNMENT PROCEDURE

1. For all alignment operations connect low side of signal generator to common negative.
2. Connect output indicator to voice coil terminals of loudspeaker.
3. Set volume control to maximum.
4. Keep generator output as low as possible to avoid AVC action.

## DESCRIPTION

The model RC-7 is a 5 tube (including rectifier) table model clock radio. It is designed to operate on a 120 volt, 60 cycle AC power supply and to cover the standard AM broadcast band, 540-1620 KC.

The chassis, loudspeaker and clock-timer are contained in a one-piece vinyl covered cabinet with a hard board "SNAP-IN" back cover on which is mounted the loop antenna and the power cord interlock. When the cabinet back is removed to expose the chassis for servicing, the power cord interlock removes power from the chassis.

Step	Connect high side of signal gen. to—	Set signal gen. to—	Turn radio dial to—	Adjust for peak output
1	Pin #1 of V2 (12BA6) through .01 mf capacitor	455 kc (Modulated)	Quiet point near 1600 kc	T2 (2nd I-F trans.), top and bottom cores
2	Pin #7 of V1 (12BE6) through .01 mf capacitor			T1 (1st I-F trans.), top and bottom cores
3	Repeat steps 1 and 2			
4	Short wire placed near antenna to radiate signal	1620 kc (Modulated)	Gang fully open	C1-B-T (osc. trimmer)
5		1400 kc (Modulated)	1400 kc signal	C1-A-T (Ant. trimmer)
6		600 kc (Modulated)	600 kc signal	T3 (osc. coil) (rock gang)
7	Repeat steps 3, 4 and 5			

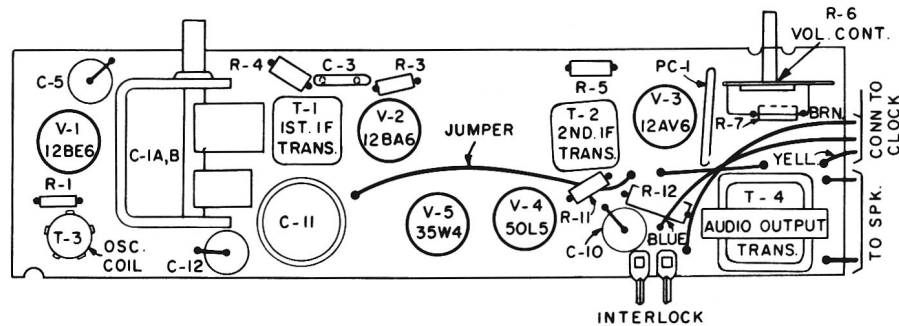


Figure 1 — Chassis Layout.

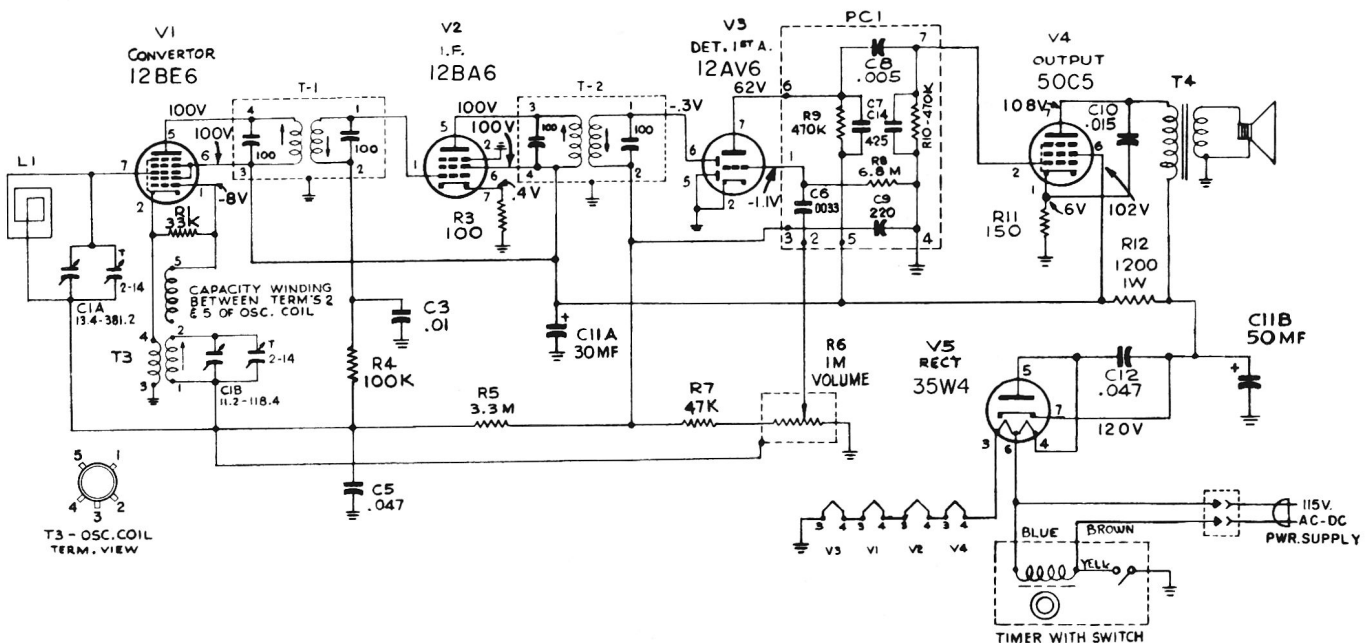


Figure 2 — Schematic Diagram.