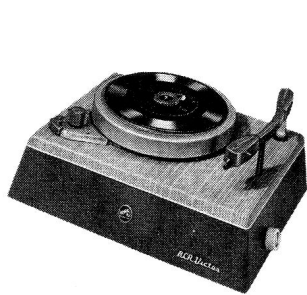




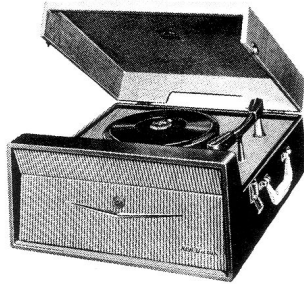
RCA VICTOR



Model K-370



Model K-371



Model K-373



Model K-374

PORTABLE RECORD PLAYER

MODELS

K-371

K-373

K-374

K-370 RECORD PLAYER ATTACHMENT

SERVICE DATA

— 1958 No. 6 —

ISSUED BY

SERVICE DIVISION

RCA VICTOR COMPANY, LTD.

MONTREAL, CANADA

ELECTRICAL AND MECHANICAL SPECIFICATIONS

| | K-370 | K-371 | K-373 | K-374 |
|--------------------------------|---|----------|----------|-----------|
| Turntable Speeds | 4 speeds 16-2/3 —33-1/3 —45 RPM —78 RPM | | | |
| Pickup | Crystal | Crystal | Crystal | Crystal |
| Tube Complement | | | | |
| Audio Amplifier | | | | 6SJ7 |
| Power Output | | 25L6GT | 25L6GT | 25L6GT |
| Rectifier | | Selenium | Selenium | Selenium |
| Loudspeaker | | 4" PM | 5" PM | 4" PM |
| Record Changer Mechanism | Model | | TU-9 | Mechanism |

GENERAL SPECIFICATIONS

THE TU9 PLAYER MECHANISM

This unit is designed to play 7", 10" and 12" diameter records at 16 $\frac{2}{3}$, 33 $\frac{1}{3}$, 45 or 78 r.p.m. as required.

An on/off knob is provided to enable the turntable to be stopped while the record is being changed, this lever does not switch off the motor but merely disconnects the drive mechanism from the turntable. A separate mains switch must be used to switch off the motor.

The on/off knob should always be set to "off" when the unit is not in use, in order to take the pressure of the motor spindle off the rubber rim of the jockey pulley.

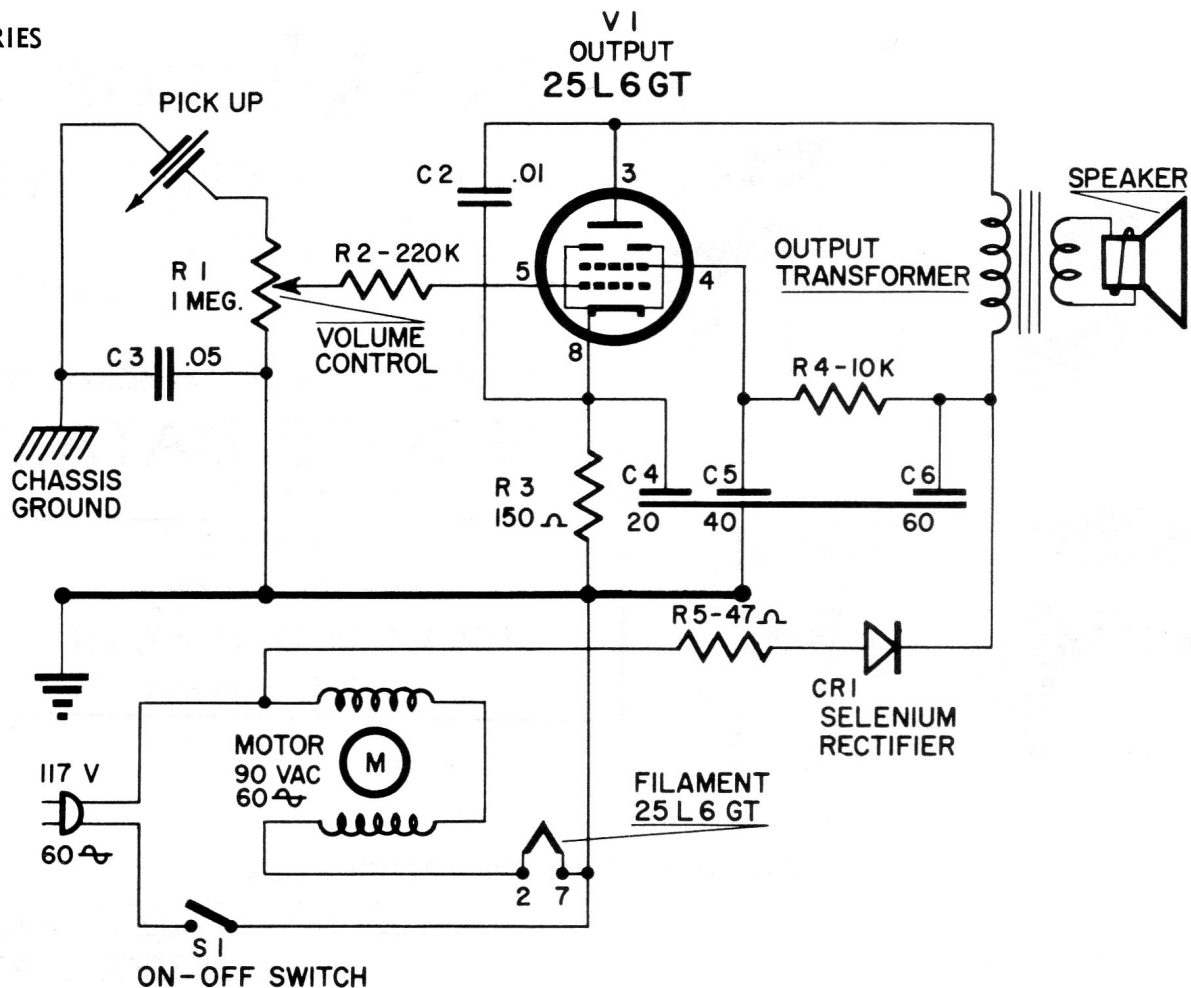
The speeds are altered very simply by rotation of the speed change knob which it is advisable to operate when the motor is running.

The turntable adapter is provided for use with 7" records having large centre holes. To use this adapter it should be lifted gently until it can be turned in an anti-clockwise direction. After turning it will remain in the raised position and will be sufficiently high above the turntable level to locate a large centre hole record.

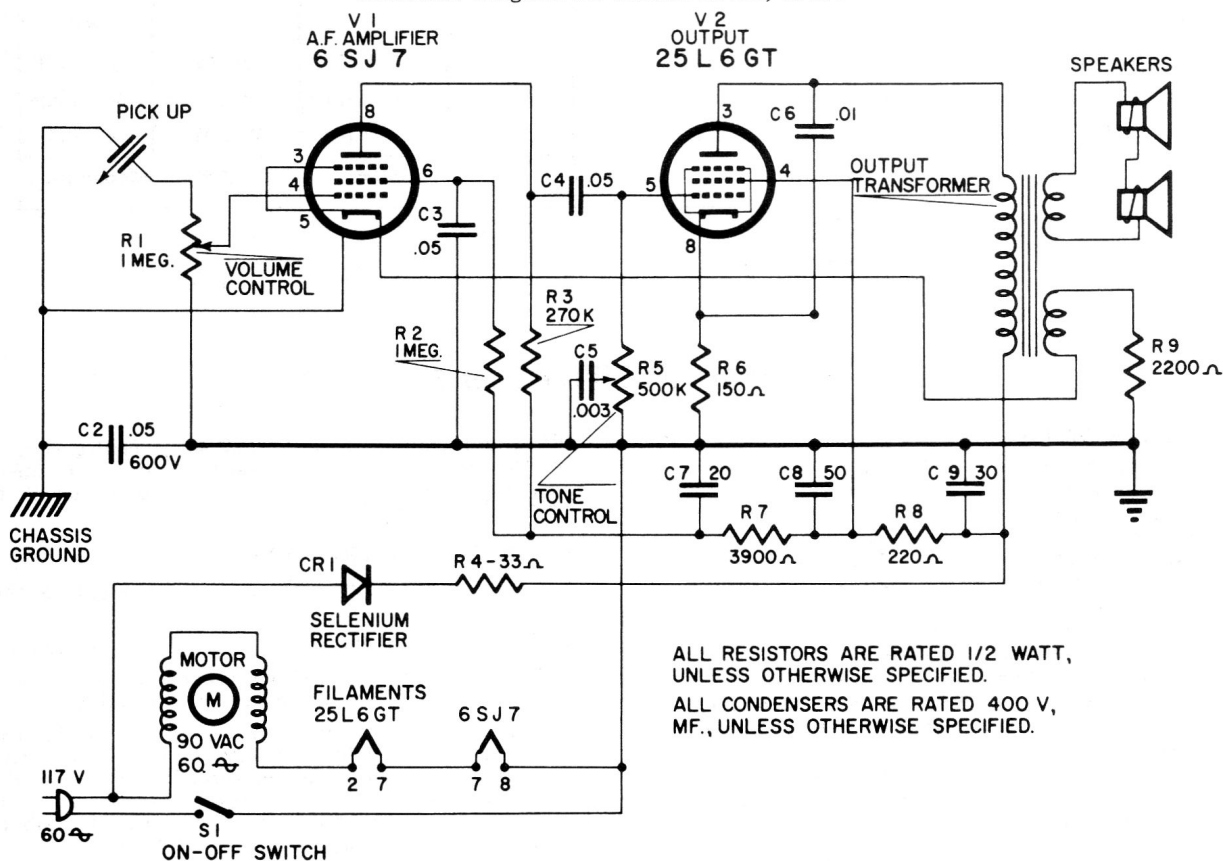
When a record with a normal small centre hole is to be played it is only necessary to turn the turntable adapter in a clockwise direction and lower it down below the record level.

OPERATION INSTRUCTION.

1. Switch on motor, with the on/off knob in the on position.
2. Set the speed change knob to the speed required.
3. Move the on/off knob to the off position and load the required record on to the turntable.
4. Make sure that the cartridge is set to the correct stylus. The cartridge indicator should show red L.P. upwards for long playing records and green 78 upwards for standard records. When the correct stylus has been chosen move the on/off knob to on and place the stylus point carefully on the start of the record which should now be revolving at the correct speed.



Schematic Diagram for Models K-371, K-373



Schematic Diagram for Model K-374

REPLACEMENT PARTS LIST

Insist on Genuine Factory Tested Parts, which are readily identified and may be purchased from Authorized Dealers.

| SYMBOL | STOCK NO. | DESCRIPTION | SYMBOL | STOCK NO. | DESCRIPTION |
|--------|-----------|--------------------------------------|--------|-----------|---|
| | | CHASSIS ASSEMBLY for Model K-374 | | | CHASSIS ASSEMBLY for Models K-371 & K-373 |
| C-2 | | Capacitor-.05 mfd. 10% 600V | C-2 | | Capacitor-.01 mfd. 10% 400V |
| C-3 | | Capacitor-.05 mfd. 10% 600V | C-3 | | Capacitor-.05 mfd. 10% 600V |
| C-4 | | Capacitor-.05 mfd. 10% 600V | C-4 | | Capacitor-Electrolytic-20 mfd. |
| C-5 | | Capacitor-.003 mfd. 10% 400V | C-5 | | Capacitor-Electrolytic-40 mfd, 150V |
| C-6 | | Capacitor-.01 mfd. 10% 400V | C-6 | | Capacitor-Electrolytic-60 mfd. |
| C-7 | | 20 mfd. | | | |
| C-8 | #S-20435 | Capacitor, Electrolytic 60 mfd. 400V | | | |
| C-9 | | 40 mfd. | | | |
| R-1 | S-20433 | Resistor-1 megohm-Volume Control Sw. | R-1 | S-20433 | Resistor-Volume Control-1 megohm Sw. |
| R-2 | | Resistor-1 megohm 10% 1/2 W | R-2 | | Resistor-220,000 ohms 10% 1/2 W |
| R-3 | | Resistor-270,000 ohms 10% 1/2 W | R-3 | | Resistor-150 ohms 10% 1/2 W |
| R-4 | | Resistor-33 ohms 10% 10W | R-4 | | Resistor-10,000 ohms 10% 1/2 W |
| R-5 | S-20434 | Resistor-Tone Control-500,000 ohms | R-5 | | Resistor-47 ohms 20% 1/2 W |
| R-6 | | Resistor-150 ohms 10% 1/2 W | | | |
| R-7 | | Resistor-3,900 ohms 10% 1/2 W | | | |
| R-8 | | Resistor-220 ohms 10% 1/2 W | CR-1 | S-22192 | Rectifier-Selenium rectifier-80 MA. |
| R-9 | | Resistor-2,200 ohms 10% 1/2 W | | | |
| CR-1 | S-22192 | Rectifier-Selenium Rectifier-80 MA. | T-1 | S-22384 | Transformer-Output Transformer |
| T-1 | S-20448 | Transformer-Output Transformer | | | |

* Indicates New Stock Items.

| DESCRIPTION | STOCK NO. | Models | | | |
|------------------------------------|-----------|--------|-------|-------|-------|
| | | K-370 | K-371 | K-373 | K-374 |
| P. U. Pedestal Assembly | S-23046 | * | * | * | * |
| Arm - Tone Arm | *S-22338 | * | * | * | * |
| Case - Grey | *S-22339 | * | | | |
| Case - Green | *S-22340 | * | | | |
| Case - Blue | *S-22614 | | * | | |
| Case - Grey | *S-22341 | | * | | |
| Case - Green | *S-22342 | | * | | |
| Case - Yellow | *S-22343 | | * | | |
| Case - Red | *S-22344 | | * | | |
| Case - Grey | *S-22345 | | | * | |
| Case - Green | *S-22346 | | | * | |
| Case - Yellow | *S-22613 | | | * | |
| Case - Grey | *S-22347 | | | | * |
| Case - Green | *S-22348 | | | | * |
| Catch - Cover | *S-22357 | | * | * | * |
| Cartridge - TC8-M | *S-22358 | * | | | |
| Cartridge - TC8-H | *S-22361 | | * | * | * |
| Disc. 45 RPM Adap. | *S-22360 | * | * | * | * |
| Escutcheon - Twin Speaker | *S-22362 | | | | * |
| Handle - Plastic - White | *S-22363 | | * | * | |
| Hinges - Cover Hinges | S-22368 | | * | * | * |
| Knob - Control Clear | S-22370 | * | * | * | |
| Knob - Control Clear | S-22371 | | | | * |
| Motor 4 Speed Motor 60 cycle. | S-22372 | * | * | * | * |
| Posts - Handle Posts | S-22373 | | * | * | |
| Speaker - 4" PM | S-20698 | | * | | * |
| Speaker - 5" PM | S-11236 | | | * | |
| Stylus - TC8R (45-33 1/4 - 16-2/3) | S-22374 | * | * | * | * |
| Stylus - TC8G (78 RPM) | S-22375 | * | * | * | * |
| Support - Tone Arm Support | S-22376 | * | * | * | * |
| Turntable | S-22377 | * | * | * | * |
| Washer - Turntable "C" | S-22378 | * | * | * | * |
| Instruction Manuals | S-22379 | * | * | * | * |

* Indicates New Stock Items.

Only items listed under stock numbers are available as Replacement Parts.

All parts subject to change or withdrawal without notice.

SPEAKER PHASING

For additional information on speaker phasing, refer to the Supplementary Information at the front of this volume.