

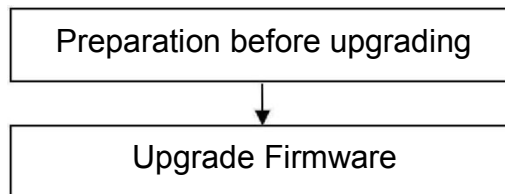
Upgrade Guidance for HD Cameras

This firmware is for HD cameras FI9902P、G2EP、R2M、FI9912P、FI9912EP. Please check your camera model on the bottom sticker. Updating with the wrong firmware could severely damage and/or break your camera. Please make sure the firmware is correct.

Note:

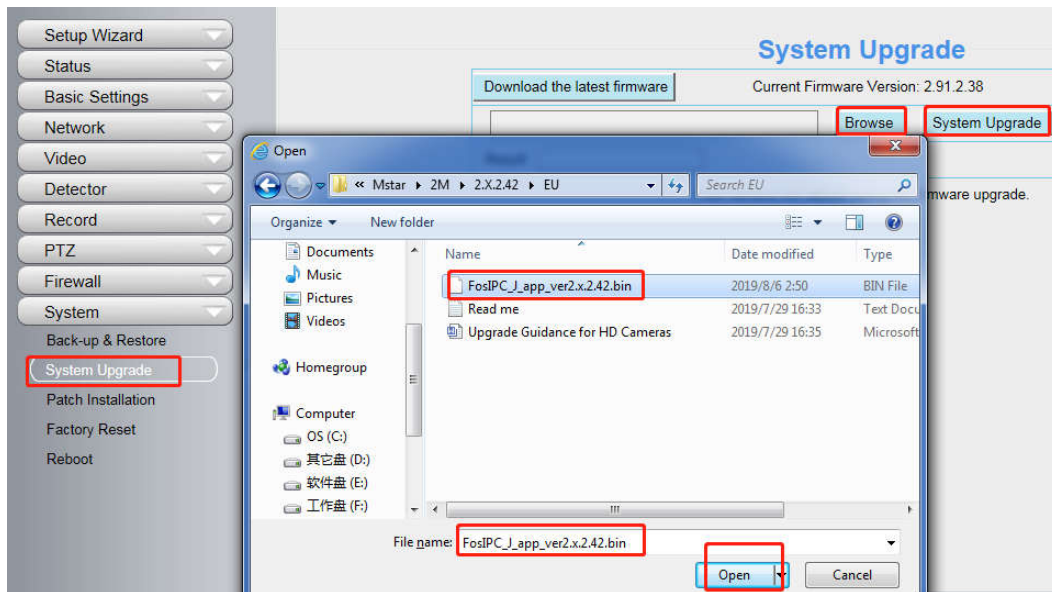
System firmware 1.13.1.6, 1.13.1.7 App firmware, 2.x.2.9, 2.x.2.13, 2.x.2.14, 2.x.2.15, 2.x.2.16, 2.x.2.36, 2.x.2.38 can upgrade to this version.

If camera upgraded to this firmware, it cannot be downgraded to previous firmware versions.

**Preparation before upgrading:**

1. Please restart your camera before the upgrading;
2. Connect camera to router with an Ethernet cable before upgrading;
3. DO NOT upgrade firmware via wireless;
4. DO NOT upgrade firmware over internet, just finish it in LAN;
5. Keep power on during the upgrading;
6. Logging your camera as administrator first, upgrade firmware on web page.
7. Suggest to unplug SD card before upgrade.

Step 1 : Login your camera, go to **Settings-->System-->System Upgrade**. Click Browse/Choose File, find the file **FosIPC_J_app_ver2.x.2.42.bin** you've extracted in your local hard driver, then click **Open**. Camera will upgrade after you click on **System Upgrade**.



Step 2: Login again to check the **System Firmware Version**, **Application Firmware Version** and **Plug-In Version**.

Device Information	
Refresh	
Camera Name	Foscam_camera
Camera ID	00626E8BF0D7
Camera Time	2019/08/01 07:47:17
System Firmware Version	1.13.1.7
Application Firmware Version	2.91.2.42
Plug-In Version	5.1.0.13

Note:

You'd better re-install the plug-in if it did not upgraded;

Congratulations, your camera successfully upgraded to the latest firmware!

End

--- By Foscam Technical Support Team